



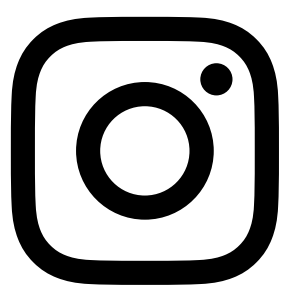
# SEX MAKE UP

VIKTORIYA VLASENKO

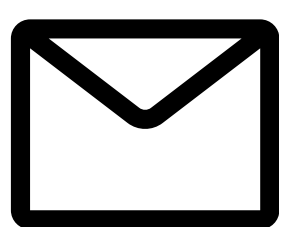
# VIKTORIIA VLASENKO

Hey, My name is Viktoriia Vlasenko. I'm a SFX makeup artist, hair stylist and a costume & fashion designer.

My SFX makeup goes beyond Film, theatre and other forms of arts.



@Vik.vlasenko



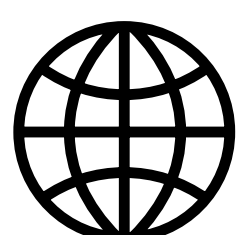
vikvdesign@gmail.com



Viktoriia Vlasenko



+1 (424)-355-4446



www.vikvdesign.com





# HORROR

# MAKEUP

Special effects makeup (sometimes shortened to “Special FX makeup” or “SFX makeup”) was pioneered in the earliest days of Hollywood on Universal’s classic horror movies. The zombie on the right shows the the change SFX can bring to the table.







Prosthetic makeup is also used to create illusions and special effects. This involves a lot of work on the makeup artist's end. First, the artist takes a cast of the body that needs enhancement.








Casting is making a mold of the body part. Once the mold has been made the artist then fills the mold with special cement to make another casting, the "positive mold."



A close-up photograph of a hyper-realistic baby sculpture. The baby's face and head are covered in a thick, glistening layer of red blood, with some areas showing a more textured, clotted appearance. The baby's eyes are closed, and its skin, visible through the blood, has a realistic texture. The background is dark and out of focus.

'Baby in Blood' is  
entirely made out  
of sculpting.

The hyper-realistic  
human form and  
blood is achieved  
through hours of  
make-up and  
cosmetics.





Not only for extra-terrestrials skins or zombies is SFX used but Producers also need SFX makeup artists for simpler jobs like wounds and scars.

This should be as close to reality as it can be to the human actual blood and flesh, as should seamlessly go with the actors face.



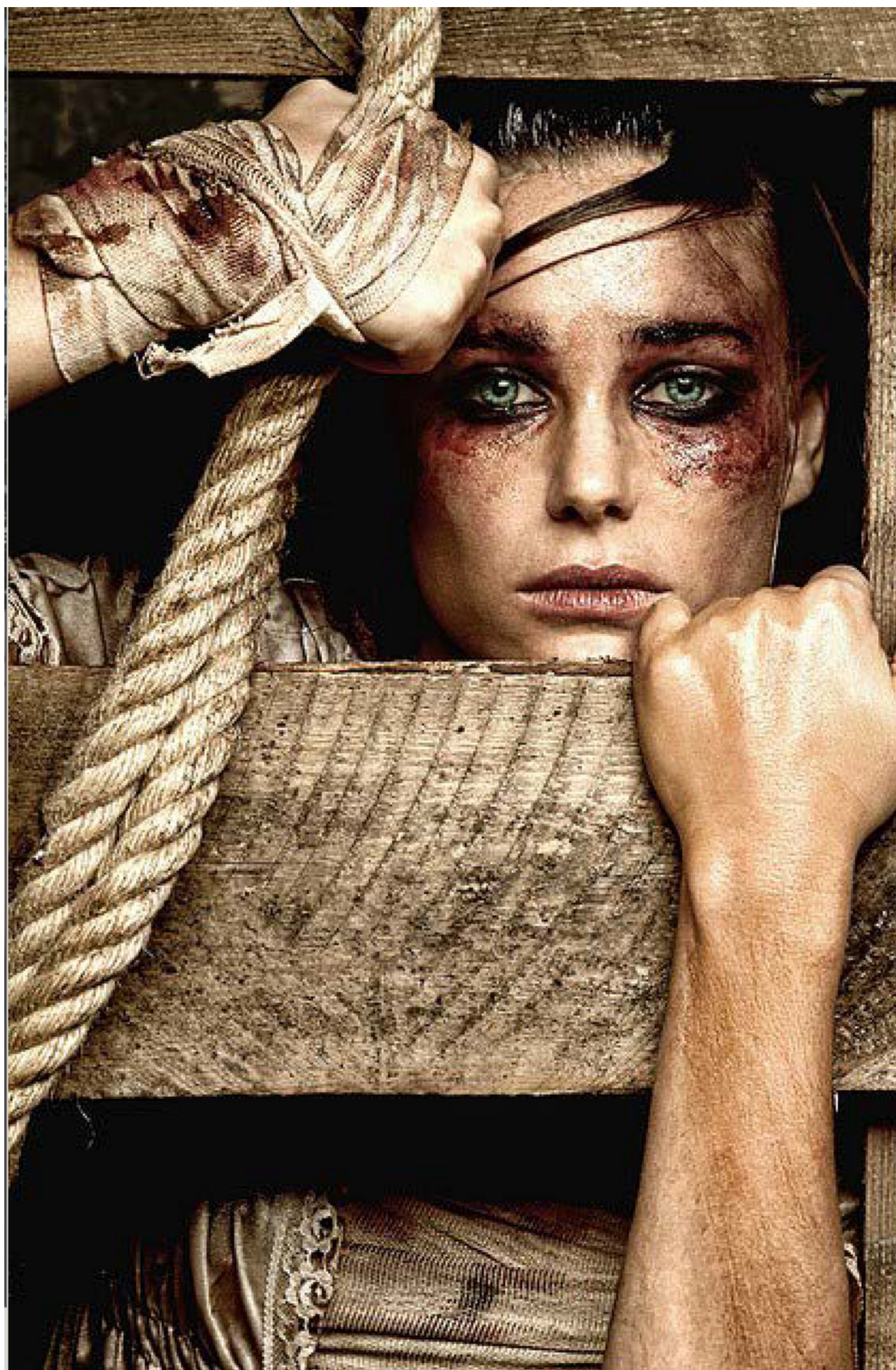








Wound and  
scars did with  
SFX Make-up  
to depict the  
horrors of  
trauma and  
torture









The artist adds clay to the mold and sculpts it with the additions or special effects that are needed before making another mold, which gets filled with foam latex, silicone or gelatin to make the final prosthetic makeup piece. "







Many Surgical scenes  
requires great SFX artist  
to make the prosthetics  
look like actual flesh of  
a dissected human body





# JOKER

# TRANSFORMATION



Joker is one of the most iconic villains in film and comic history.

Objective was to make a real-like Joker inspired by Batman: The Animated Series.





This hair was dyed to give a dark black with green flairs.

Makeup with white base and prosthetic nose





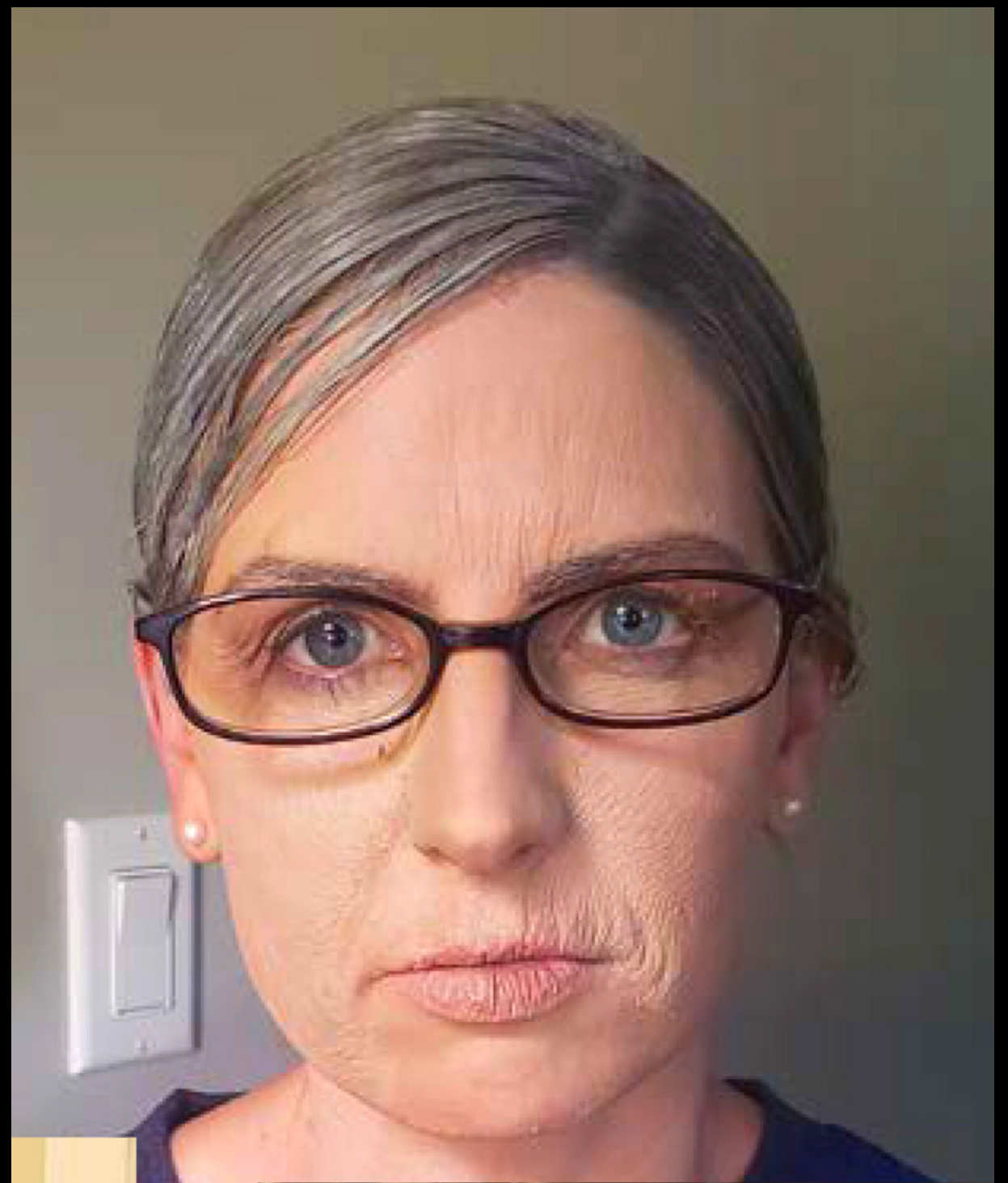
# DE-AGING SEX MAKEUP

## TRANSFORMATION

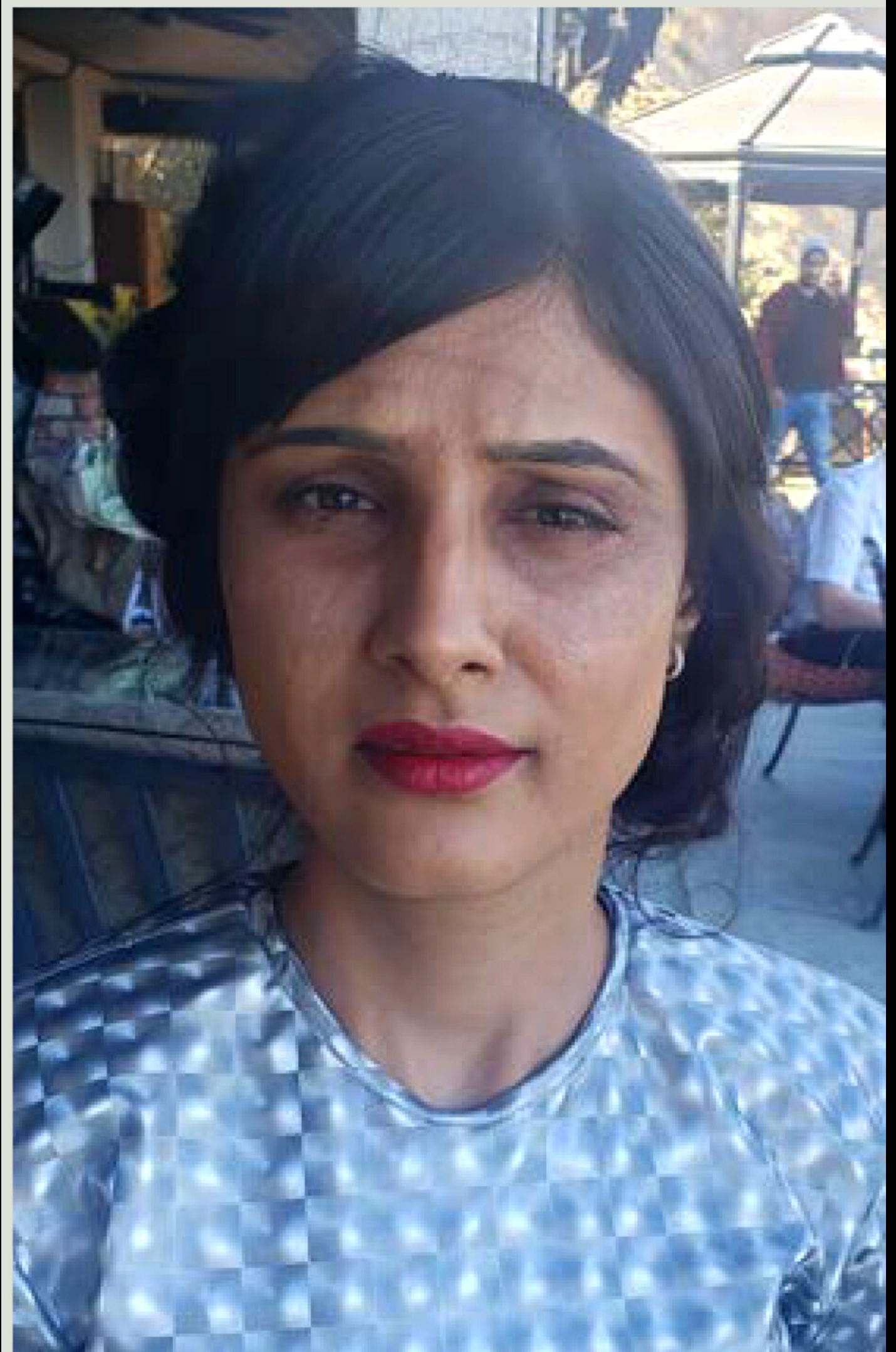
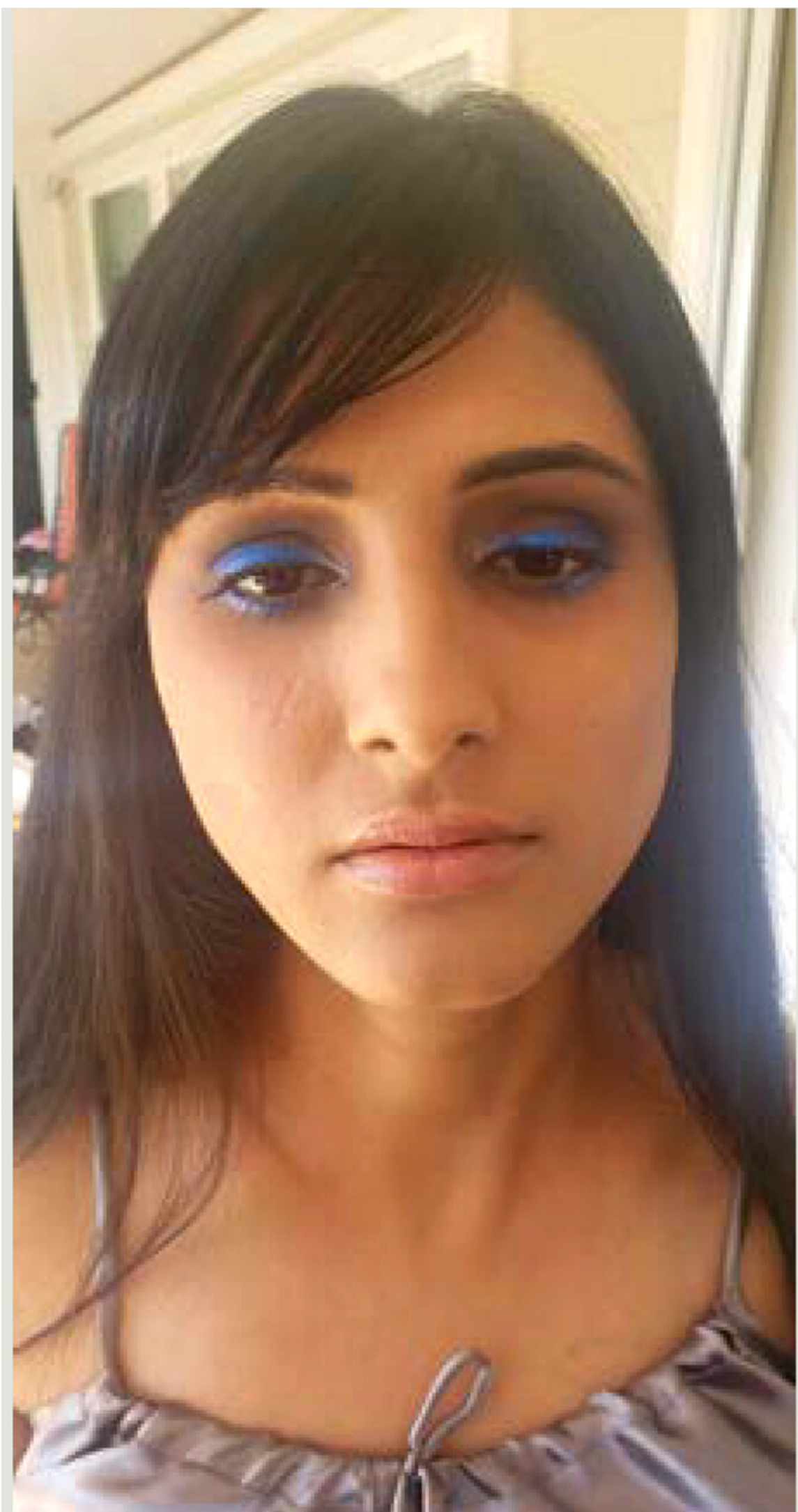
**BEFORE**



**AFTER**







Old age makeup is the act of creating a more elderly version of a model/client/actor with the help of makeup. This is known as a more realistic type of character development makeup.



# MAKE-UP AND COSTUME DESIGN

Make-up and costume must go hand-in-hand to compliment each other.

The photo on the right was a alien-age costume and the SFX make-up for the alien dummy and model.







**Assassin  
make-up:  
Strong Red  
lipstick with  
bleeding red  
eyes on a  
white  
costume:**





# SET ME FREE



Horror makeup  
for movie 'Set Me  
Free'

White facepaint  
with dark  
smudged SFX  
make-up







Make-up and hair hair for a theatre project.

Multi-tone eye shades on a white mime base gives a theatrical look to the artist







Some Behind-the-scenes from cover shoot .

Make-up for a couple cover shoot done by me.





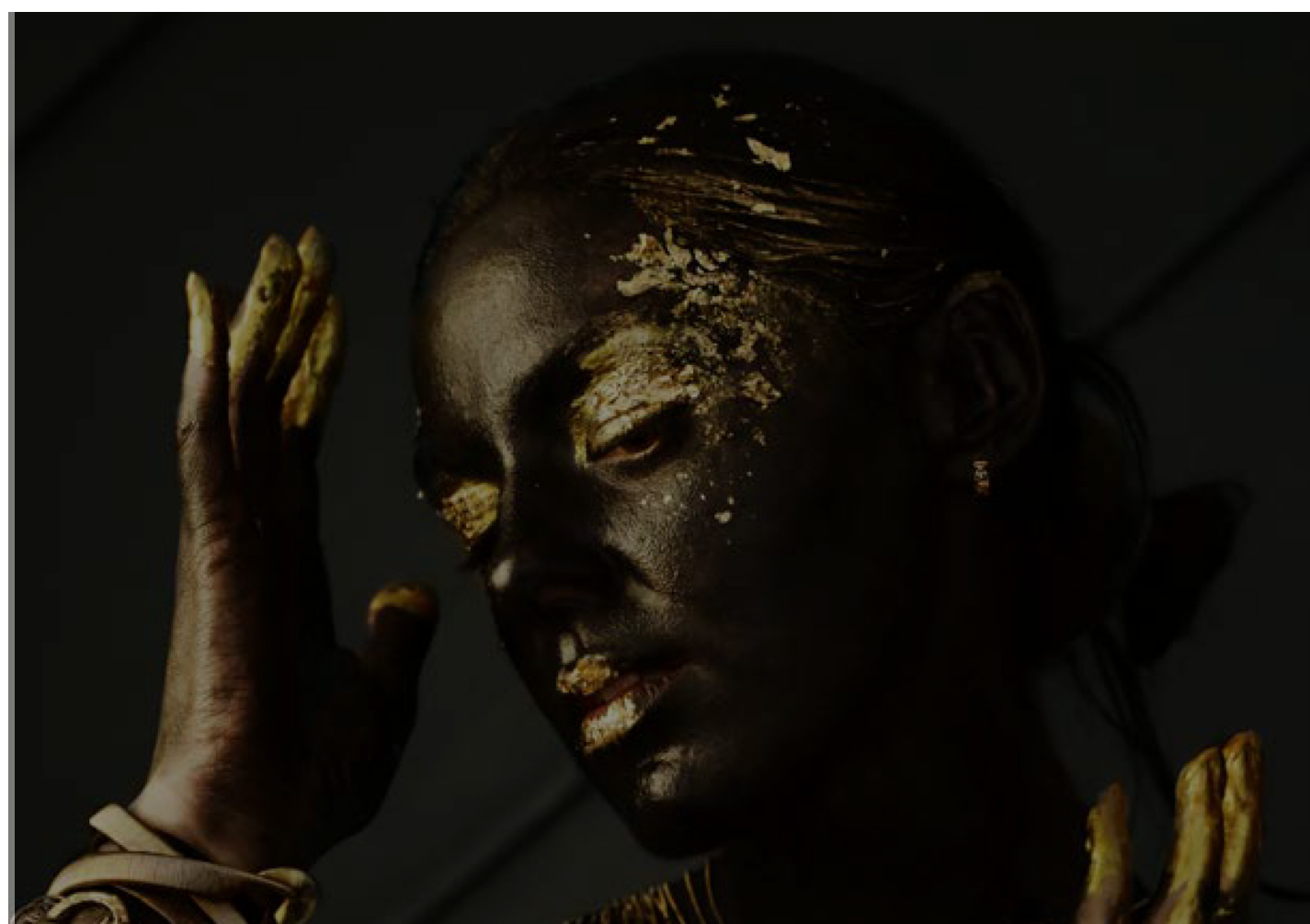
Glitters and  
gold  
highlights for  
in contrast to  
the black  
goth eyeliner  
and lipstick  
this theatre  
artist







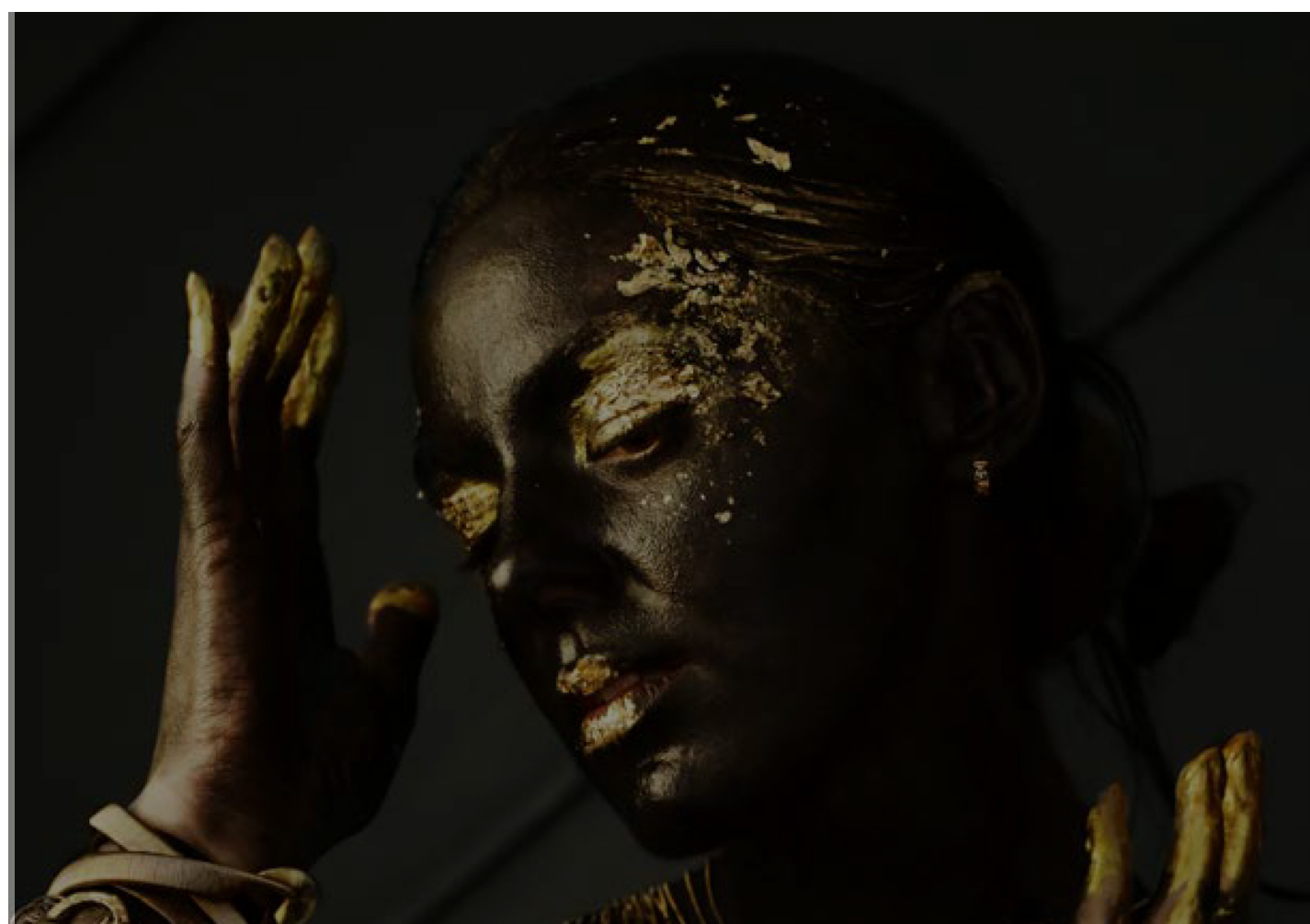
Make-up done for '  
Betrayed Theatre  
Project'







Make-up done for '  
Betrayed Theatre  
Project'











SFX make-up  
on the  
forehead in the  
above photo.

Wild, Exotic  
dungeon look  
for this act







**SFX make-up  
on the  
forehead in the  
above photo.**

**Wild bold look by  
make-up for this  
costume**





**Make-up inspired by  
African Arabian style  
of clothing for a  
fashion design shoot.**







Sharp-bold look  
with strong colors  
and a sharpened  
contour makeup  
to compliment





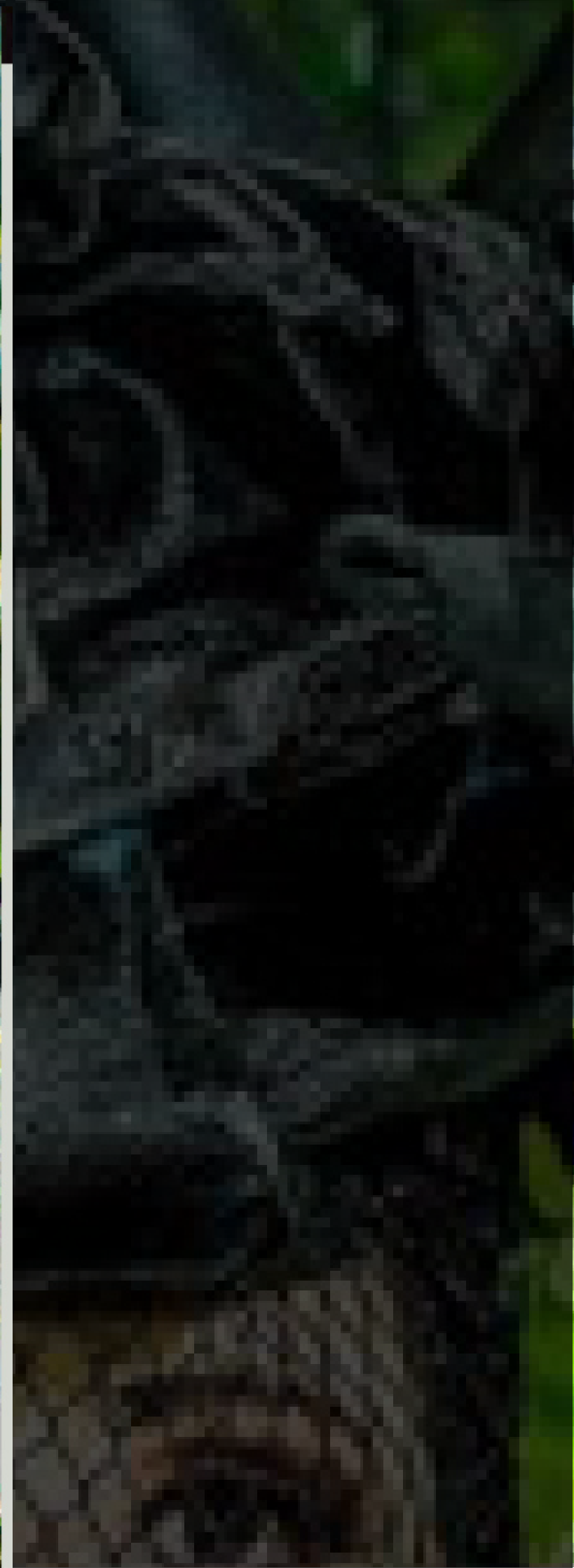
Floral gown with  
sharp feature  
enhancing  
make-up





Japanese-culture inspired make-up.





Black Smokey  
contour and  
texture on the  
eyes.

Renaissance  
woman makeup



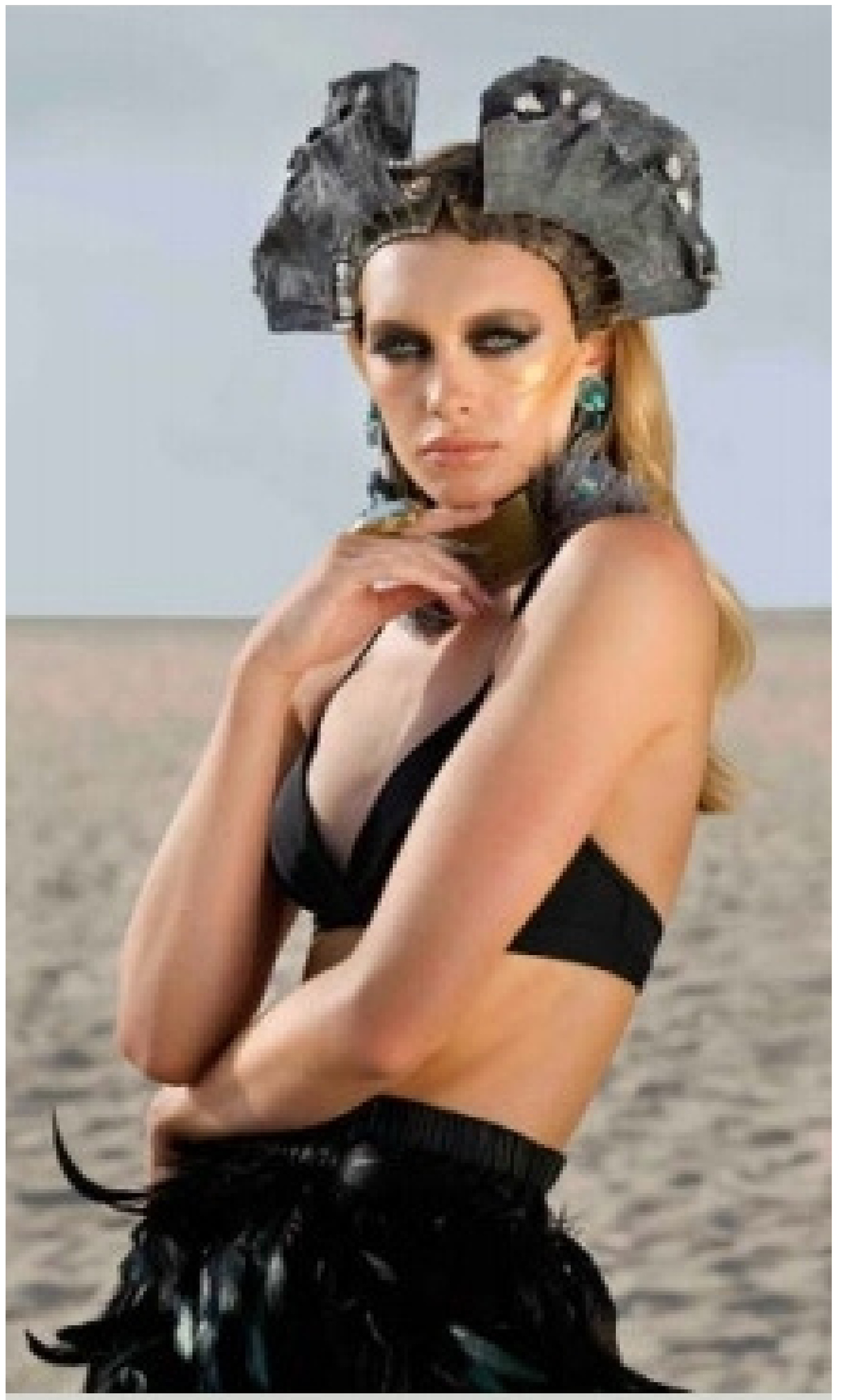


# M O O D

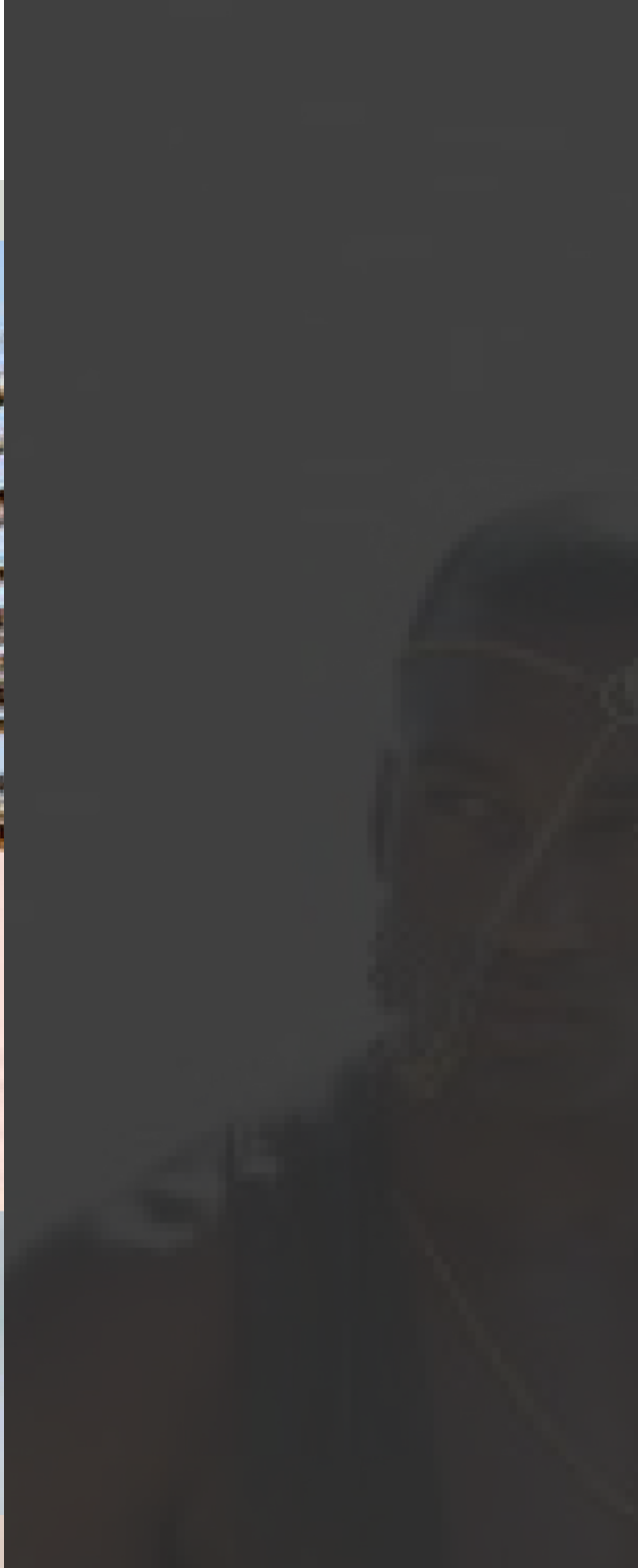


Daylight shoot  
on strong colors  
and a sharpened  
contour makeup  
to compliment

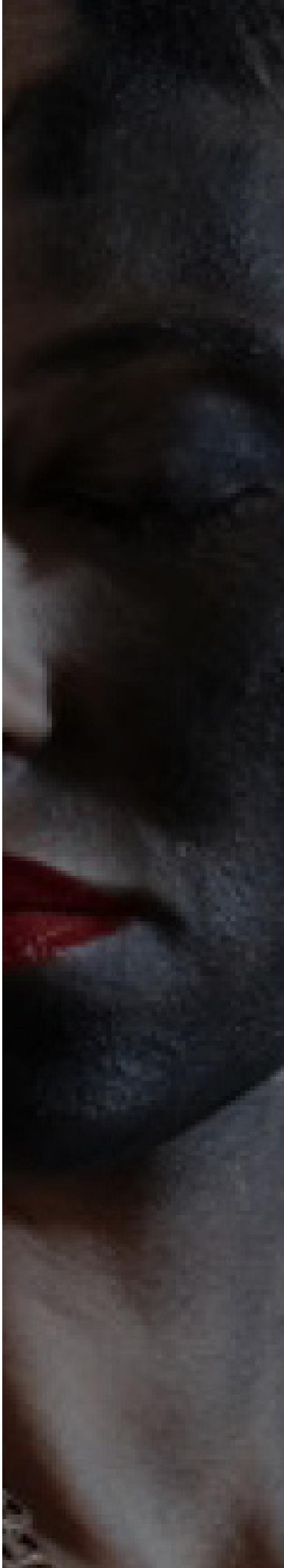
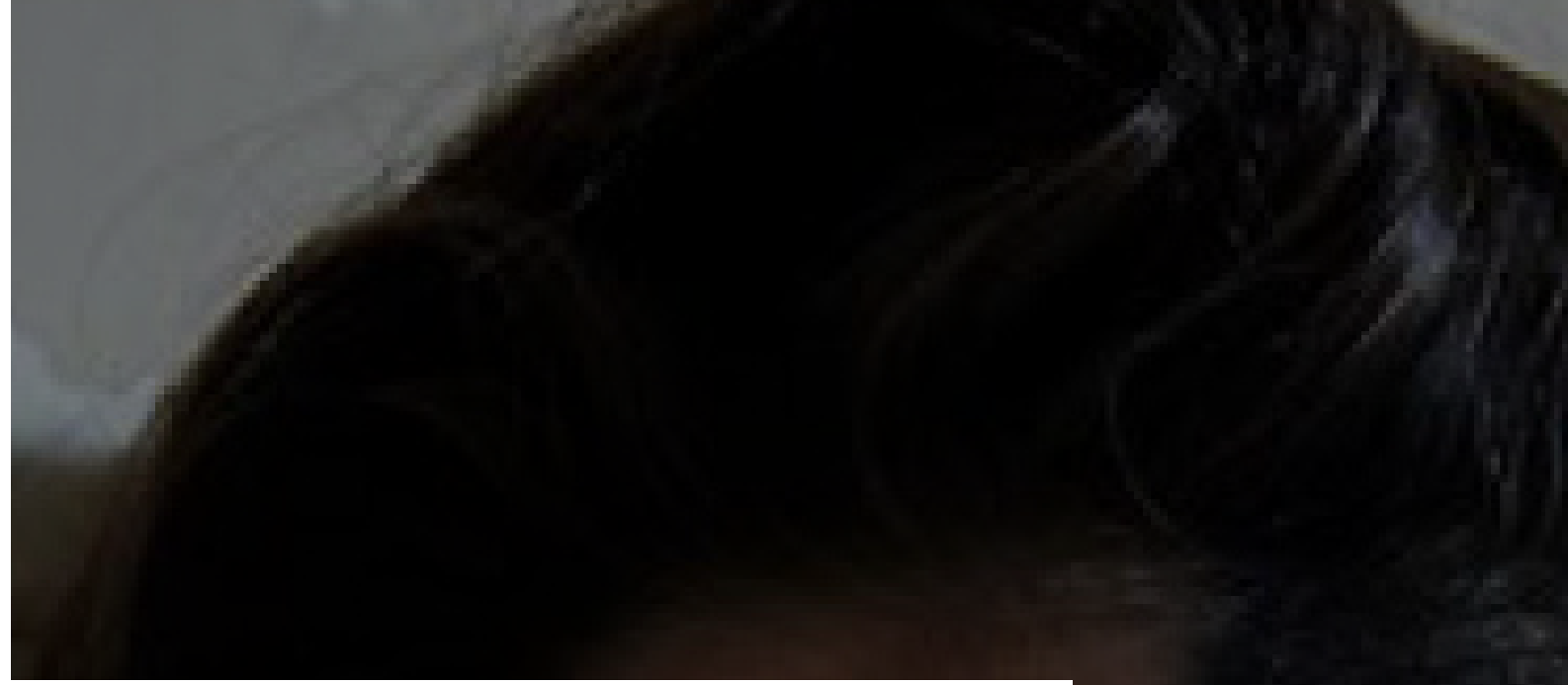
Highlighter  
enhances the  
features.



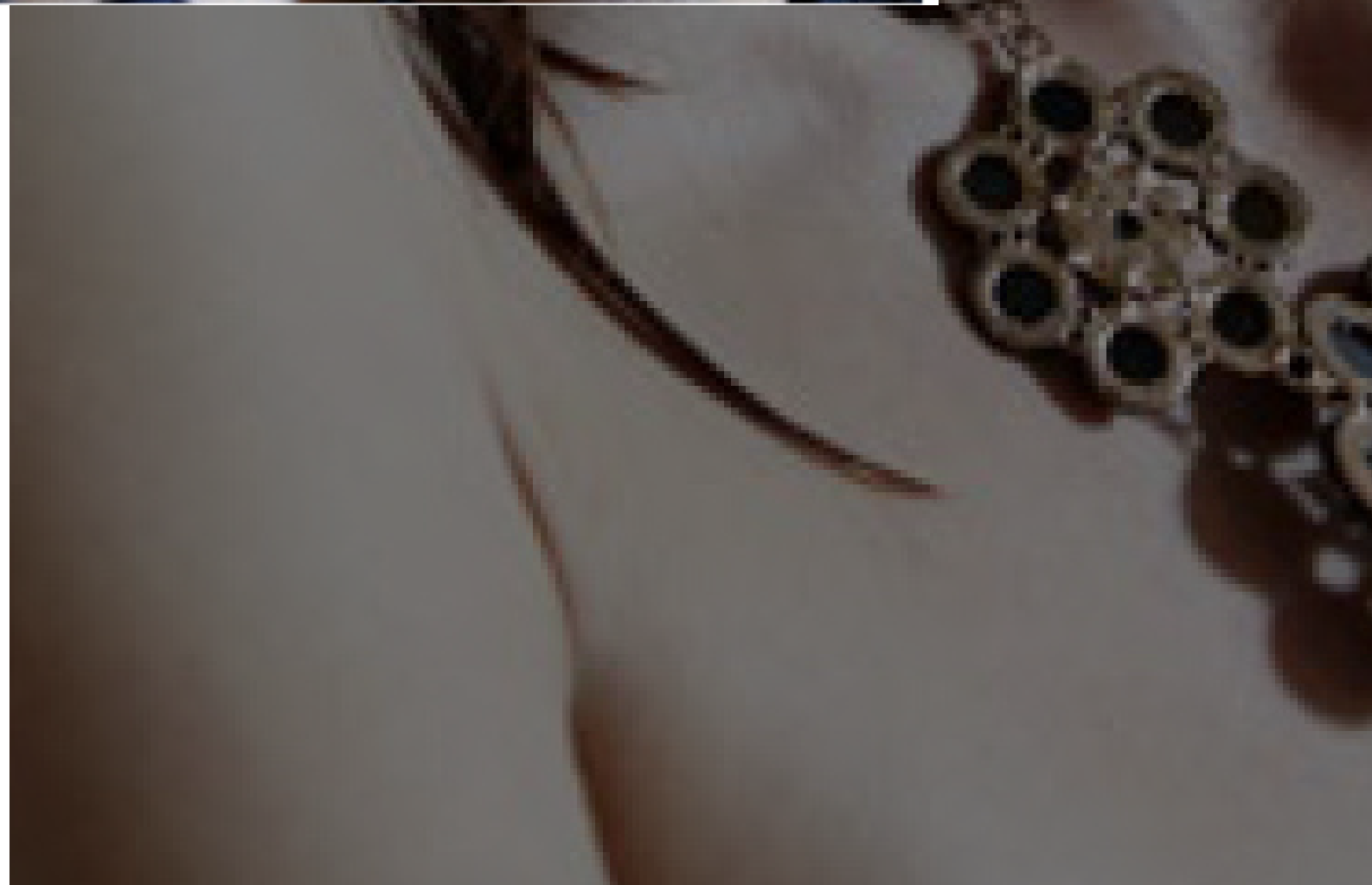




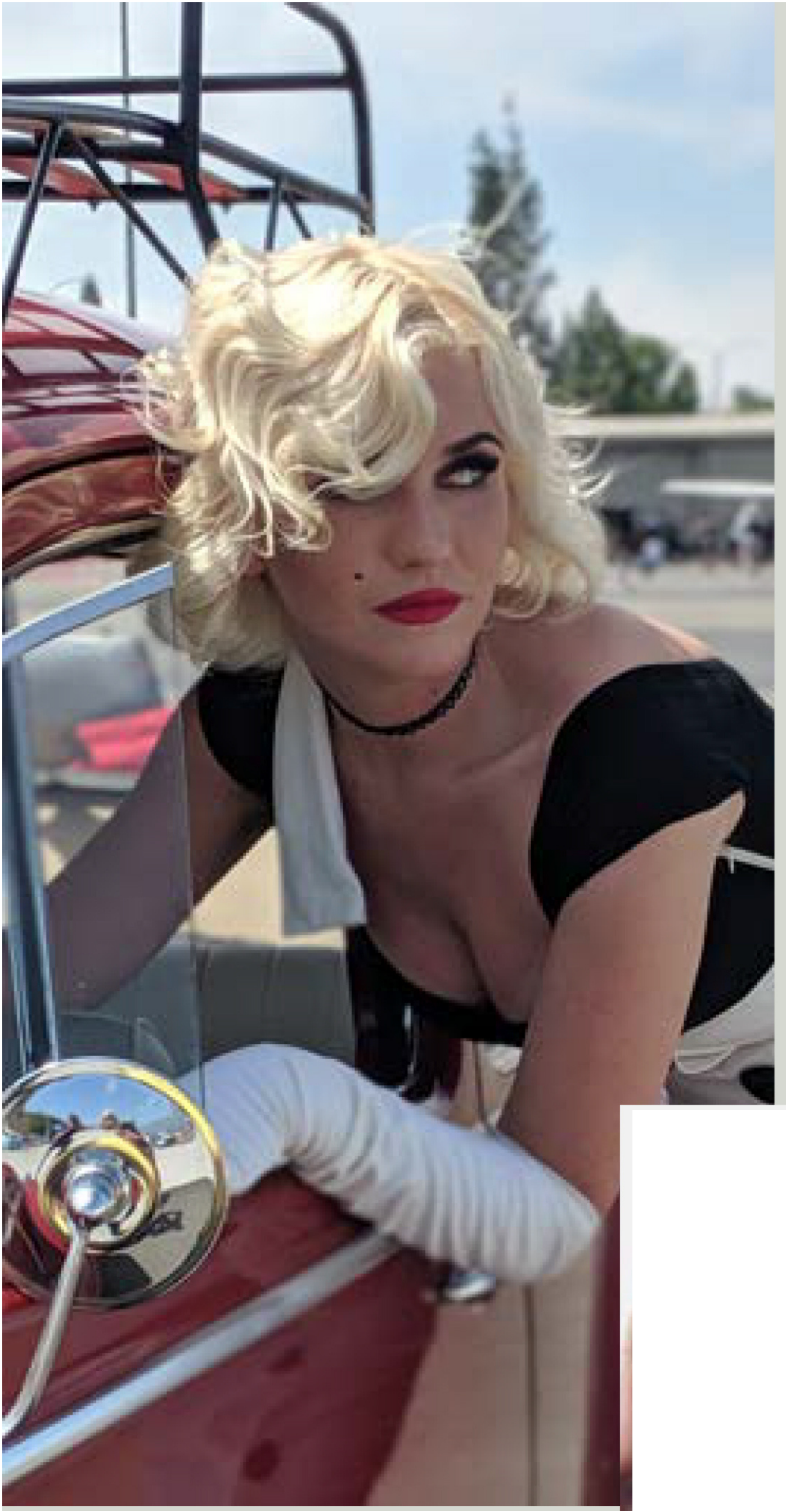




Face-paint SFX  
Effect for a Dark  
Theme Shoot





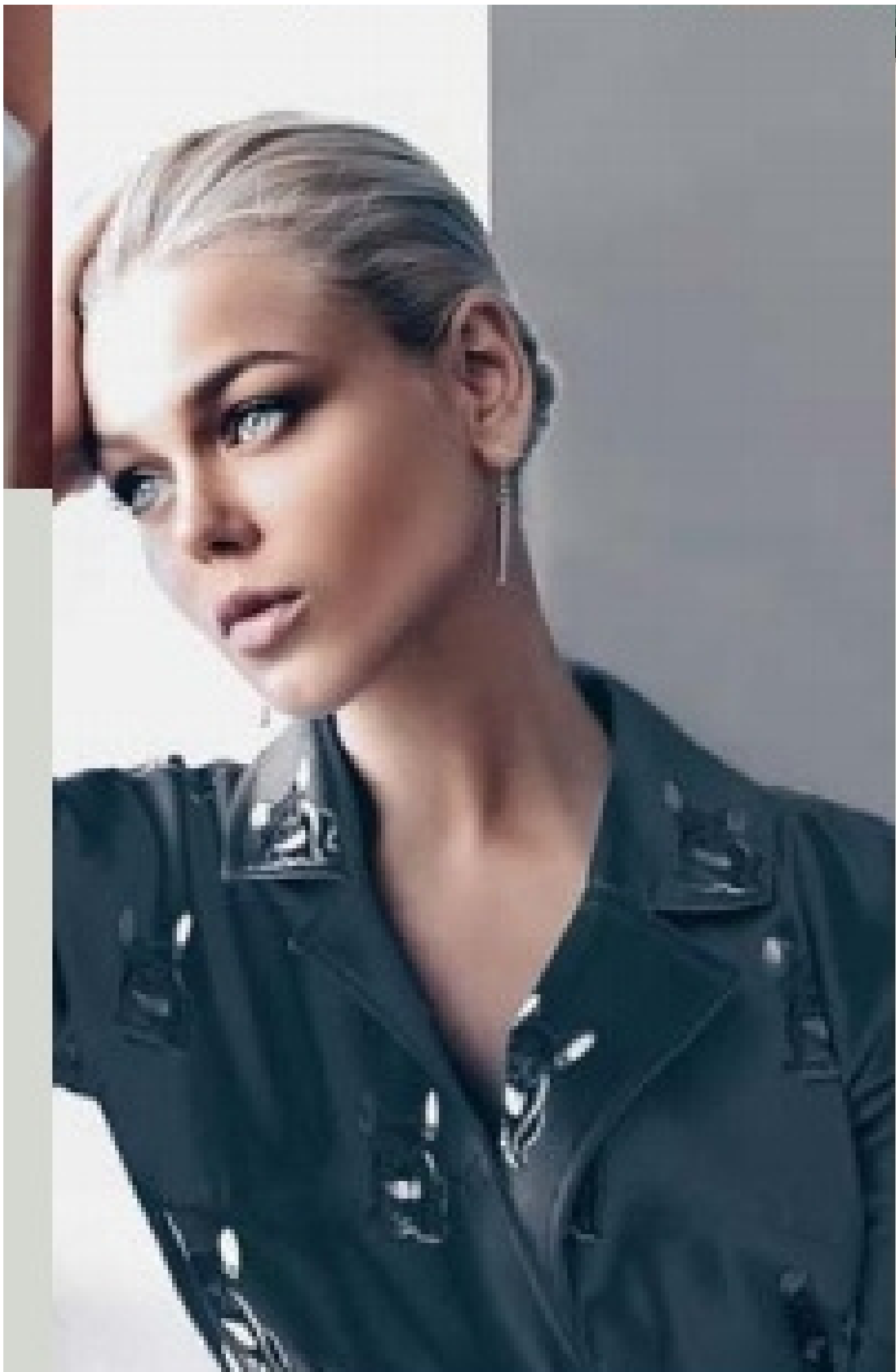


Vintage photos  
recreation.

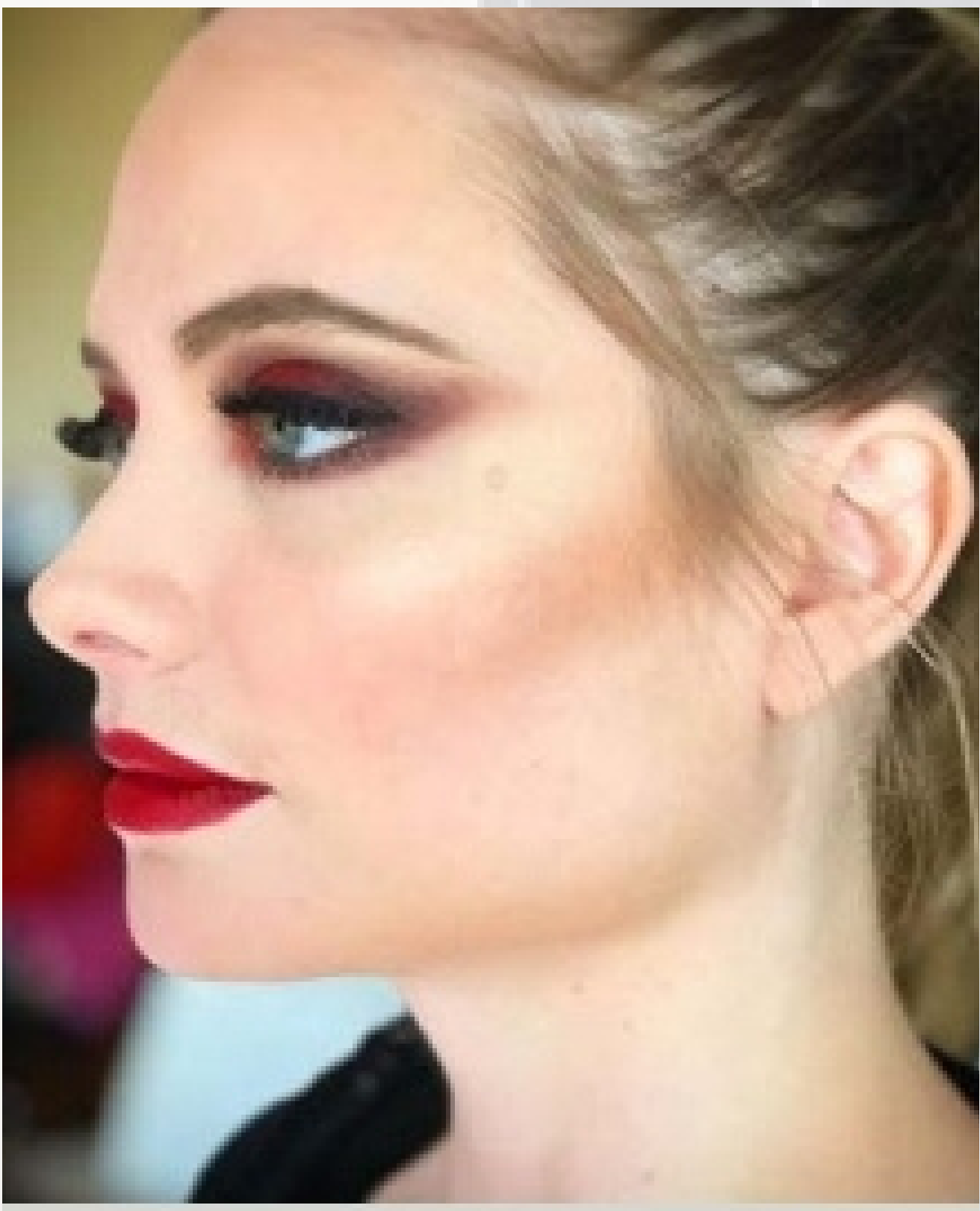
Make-up to  
depict that era.













SFX make-up  
on the  
forehead and  
eyes. Red  
bloody look.







Some more  
make-up done  
for different  
tones with  
varying tints  
and shades





**Yellows and  
Pinks**

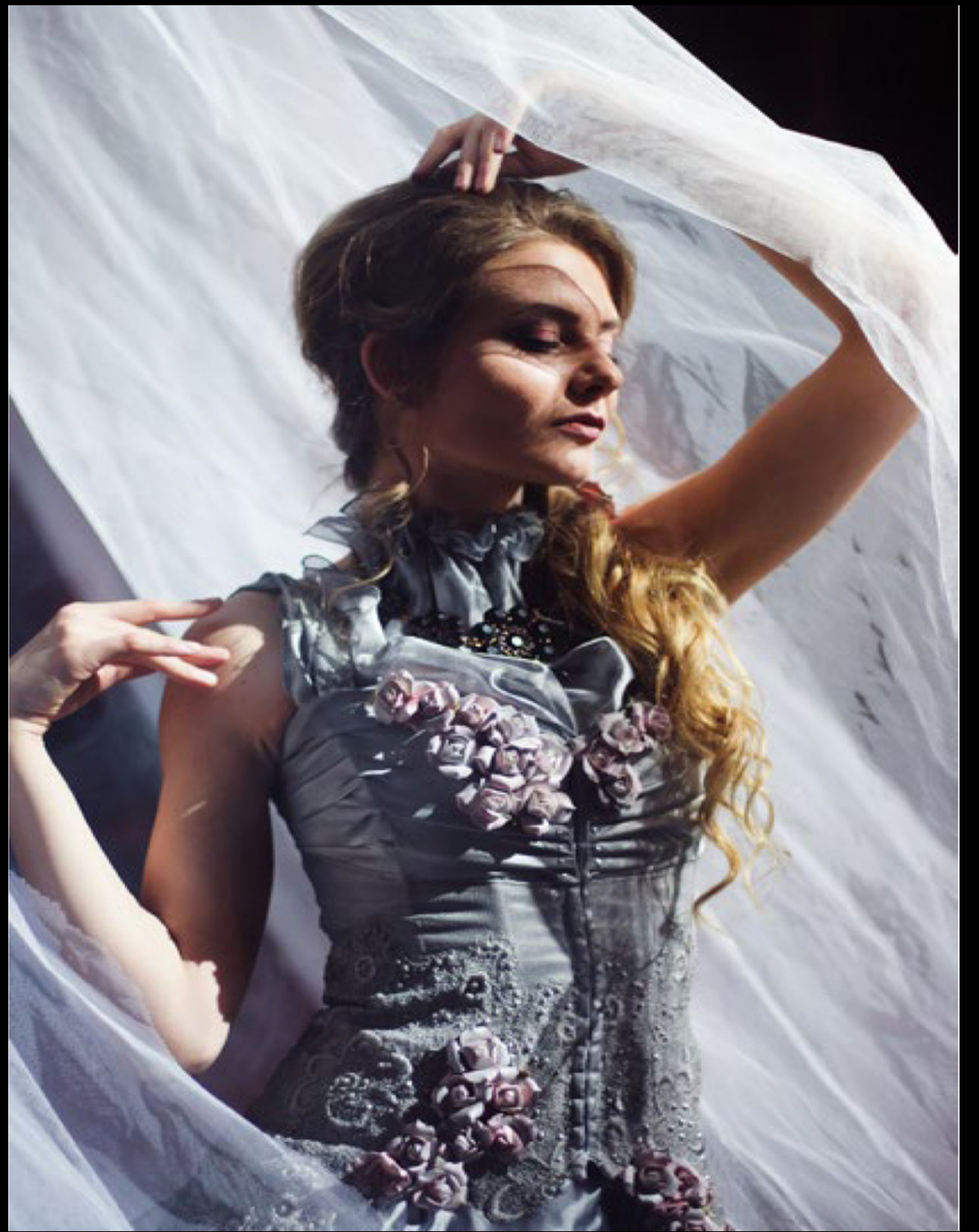


## B&W Make-up

Black and white photography records colors on a gray scale. Balancing color and definition with contrast is the key to beautiful black and white pictures







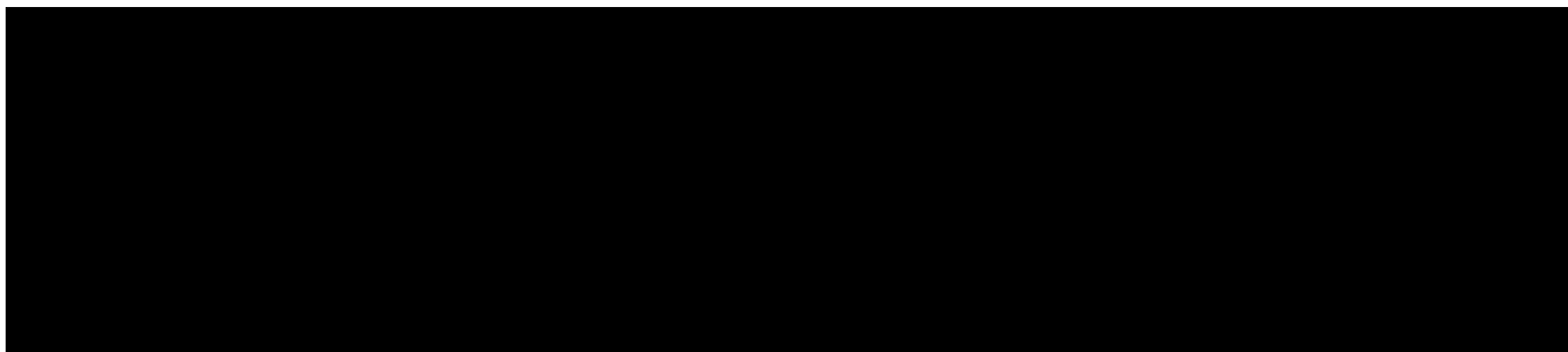
**Make-up can highly effect the character of the story. Different make-up done fo various roles**





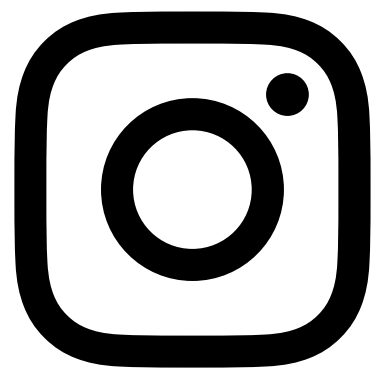
# Eyeshades

Different Eyeshades for different looks.

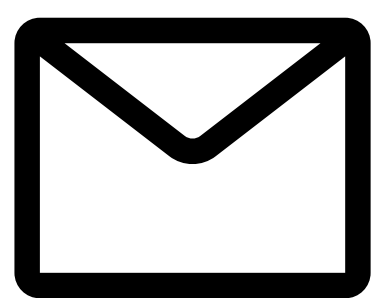




# VIKTORIIA VLASENKO



@Vik.vlasenko



vikvdesign@gmail.com



Viktoriiia Vlasenko



+1 (424)-355-4446



www.vikvdesign.com